

Value of Peers, 2017



Peers Supporting Recovery from
Mental Health Conditions

**Peers Supporting
Recovery from
Mental Health
Conditions**

“Peer support has been excellent. Helping us along the way, being there whenever you need people to talk to. I don’t know where to begin. They’re always there ... no matter what it is.”

—Mika

What is Peer Support?

Peer support¹ encompasses a range of activities and interactions between people who have shared similar experiences of being diagnosed with mental health conditions. This mutuality—often called “peerness”—between a peer worker and person using services promotes connection and inspires hope.

Peer support offers a level of acceptance, understanding, and validation not found in many other professional relationships (Mead and McNeil, 2006). “I am an expert at not being an expert, and that takes a lot of expertise,” said one (anonymous) peer worker, highlighting the supportive rather than directive nature of the peer relationship (Promise Resource Network, 2016). By sharing their own lived experience and practical guidance, peer workers help people to develop their own goals, create strategies for self-empowerment, and take concrete steps towards building fulfilling, self-determined lives for themselves.





1

This document focuses exclusively on peer support services related to mental health conditions.

What Do Peer Support Specialists Do?

Support the Recovery of Individuals

Peer workers offer encouragement, practical assistance, guidance, and understanding to support recovery. Peer support workers walk alongside people in recovery, offering individualized supports and demonstrating that recovery is possible. They share their own lived experience of moving from hopelessness to hope. They share tools that can complement or replace clinical supports by providing strategies for self-empowerment and achieving a self-determined life. They support people in recovery to connect with their own inner strength, motivation, and desire to move forward in life, even when experiencing challenges. Peer workers offer different types of support, including:

-  emotional (empathy and camaraderie)
-  informational (connections to information and referrals to community resources that support health and wellness)
-  instrumental (concrete supports such as housing or employment)
-  affiliational support (connections to community supports, activities, and events)

What Do Peer Support Specialists Do? *cont.*

Improve Mental Health Systems

Peer support is valuable not only for the person receiving services, but also for behavioral health professionals and the systems in which they work. Peer workers educate their colleagues and advance the field by sharing their perspectives and experience in order to increase understanding of how practices and policies may be improved to promote wellness and resiliency. This is particularly important in mental health systems, where historical oppression, violence, and discrimination present significant barriers to recovery for many people. Peer workers play vital roles in moving behavioral health professionals and systems towards recovery orientation.

*“Because of peer support,
I can stand on my own today.”*

—John

IS PEER RECOVERY SUPPORT EFFECTIVE FOR PEOPLE WITH MENTAL HEALTH CONDITIONS?

The research on peer support in mental health systems is still emerging, but findings are promising. The research to date suggests that peer recovery support may result in:



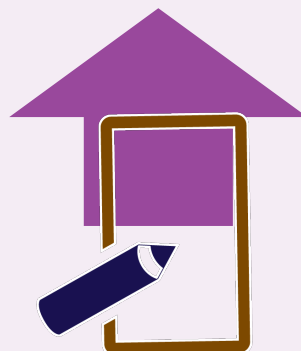
Increased empowerment and hope

(Chinman, et al., 2013, Cook, et al., 2010; Repper & Carter, 2011)



Increased social functioning

(Walker & Bryant, 2013)



Increased engagement and activation in treatment

(Druss, et al., 2010; Short, et al., 2012; Bellamy, et al., 2012)



Increased community engagement

(Min, et al., 2007)

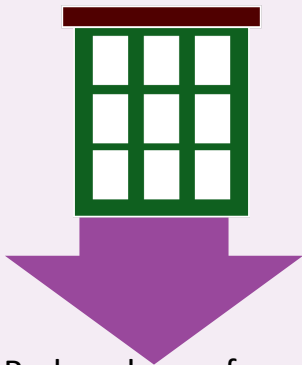


Increased quality of life and life satisfaction

(Bologna & Pulice, 2010; Felton, et al., 1995)

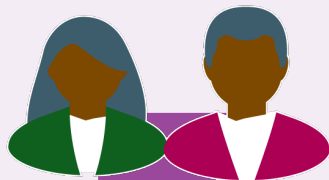
IS PEER RECOVERY SUPPORT EFFECTIVE FOR PEOPLE WITH MENTAL HEALTH CONDITIONS? *cont.*

The research on peer support in mental health systems is still emerging, but findings are promising. The research to date suggests that peer recovery support may result in:



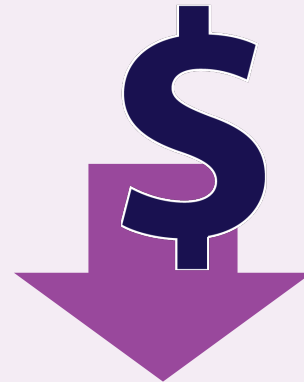
Reduced use of
inpatient services

(Chinman, et al., 2014; Min, et al., 2007; Sledge, et al., 2011)



Decreased self-stigma

(Corrigan, et al., 2013)



Decreased costs to the
mental health system

(Trachtenberg, et al., 2013)



Decreased
hospitalization

(Davidson, et al., 2012)

REFERENCES

- Bellamy, C. D., Rowe, M., Benedict, P., & Davidson, L. (2012). Giving back and getting something back: The role of mutual- aid groups for individuals in recovery from incarceration, addiction, and mental illness. *Journal of Groups in Addiction & Recovery, 7*, 223-236.
- Bologna, M. J., & Pulice, R. T. (2011). Evaluation of a peer-run hospital diversion program: A descriptive study. *American Journal of Psychiatric Rehabilitation, 14*, 272-286.
- Chinman, M., Oberman, R. S., Hanusa, B. H., Cohen, A. N., Salyers, M. P., Twamley, E. W., & Young, A. S. (2015). A cluster randomized trial of adding peer specialists to intensive case management teams in the Veterans Health Administration. *Journal of Behavioral Health Services Research, 42*, 109-121.
- Chinman, M., George, P., Dougherty, R. H., Daniels, A. S., Ghose, S. S., Swift, A., & Delphin-Rittmon, M. E. (2014). Peer support services for individuals with serious mental illnesses: Assessing the evidence. *Psychiatric Services, 65*, 429-441.
- Coatsworth-Puspoky, R., Forchuk, C., & Ward-Griffin, C. (2006). Peer support relationships: An unexplored interpersonal process in mental health. *Journal of Psychiatric & Mental Health Nursing, 13*(5), 490-497.
- Cook, J. A., Copeland, M. E., Corey, L., Buffington, E., Jonikas, J. A., Curtis, L. C., ... & Nichols, W. H. (2010). Developing the evidence base for peer-led services: Changes among participants following Wellness Recovery Action Planning (WRAP) education in two statewide initiatives. *Psychiatric Rehabilitation Journal, 34*, 113-120.
- Corrigan, P. W., & Sokol, K. A. (2013). The impact of self- stigma and mutual help programs on the quality of life of people with serious mental illnesses. *Community Mental Health Journal, 49*, 1-6.
- Davidson, L., Bellamy, C., Guy, K., & Miller, R. (2012). Peer support among persons with severe mental illnesses: A review of evidence and experience. *World Psychiatry, 11*, 123-128.
- Druss, B. G., Zhao, L., von Esenwein, S. A., Bona, J. R., Fricks, L., Jenkins-Tucker, S., Sterling, E., Diclemente, R., & Lorig, K. (2010). The Health and Recovery Peer (HARP) Program: A peer-led intervention to improve medical self-management for persons with serious mental illness. *Schizophrenia Research, 118*, 264-270.

REFERENCES *cont.*

- Felton, C., Stastny, P., Shern, D., Blanch, A., Donahue, S., Knight, E., & Brown, C. (1995). Consumers as peer specialists on intensive case management teams: Impact on client outcomes. *Psychiatric Services, 46*, 1037-1044.
- Mead, S., & MacNeil, C. (2006). Peer support: What makes it unique? *International Journal of Psychosocial Rehabilitation, 10*, 29-37.
- Min, S-Y., Whitecraft, J., Rothbard, A. B., & Salzer, M. S. (2007). Peer support for persons with co-occurring disorders and community tenure: A survival analysis. *Psychiatric Rehabilitation Journal, 30*, 207-213.
- Short, R., Woods-Nyc, K., Cross, S. L., Hurst, M., Gordish, L., & Raia, J. (2012). The impact of forensic peer support specialists on risk reduction and discharge readiness in a psychiatric facility a five-year perspective. *International Journal of Psychosocial Rehabilitation, 16*, 3-10.
- Sledge, W. H., Lawless, M., Sells, D., Wieland, M., O'Connell, M. J., & Davidson, L. (2011). Effectiveness of peer support in reducing readmissions of persons with multiple psychiatric hospitalizations. *Psychiatric Services, 62*, 541-544.
- Trachtenberg T, Parsonage M, Shepherd G, Boardman J. (2013) Peer Support in mental health: Is it good value for money? London: Centre for Mental Health
- Walker, G., & Bryant, W. (2013). Peer support in adult mental health services: A metasynthesis of qualitative findings. *Psychiatric Rehabilitation Journal, 36*, 28-34.